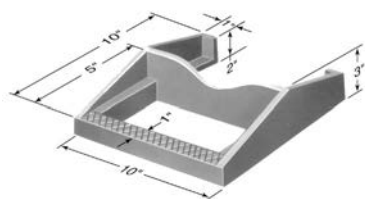
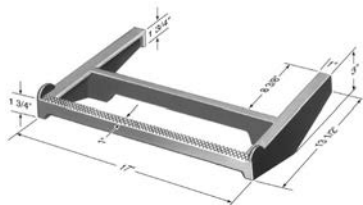


**R-1980-1-2 Series
Manhole Steps**

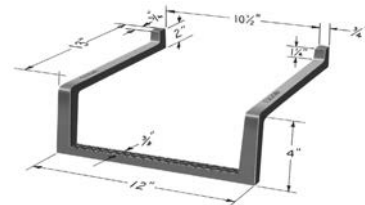
Manhole Steps shown in this series are for use in conical shaped sanitary sewer manholes equipped with standard cast iron frames and covers. Furnished in cast gray iron except as noted.



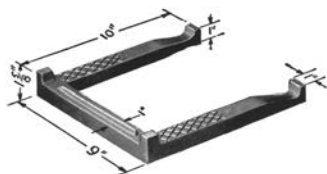
R-1980-E



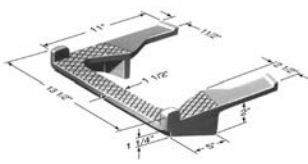
R-1980-M Wide Tread



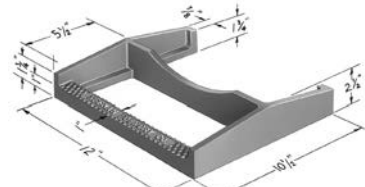
R-1981-W4 Ductile Iron
for Precast Manholes



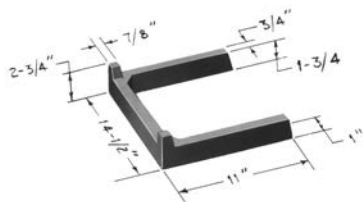
R-1980-C



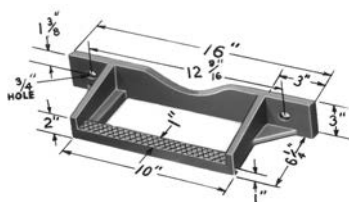
R-1980-I for Circular Walls



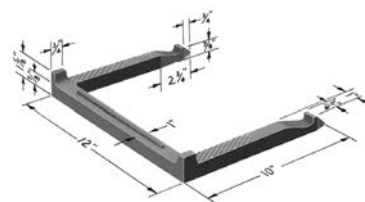
R-1981-Y for ALL Construction



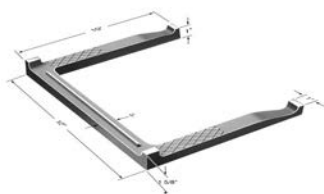
R-1980-J Heavy Construction



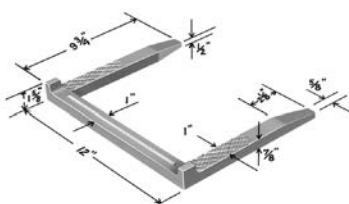
R-1980-T for Bolting



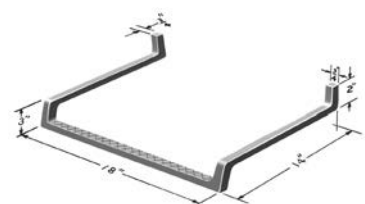
R-1982-F for Precast Manholes



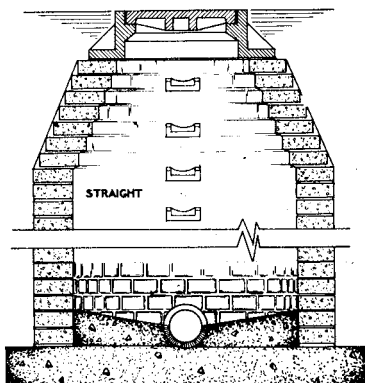
R-1981-J Wide Tread



R-1981-N for Precast Manholes

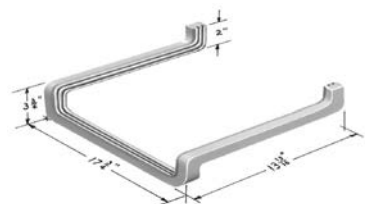


R-1982-J Ductile Iron



Steps should be installed in a vertical row on 16" centers.

Cast iron manhole steps are manufactured from high tensile iron, which has a minimum **tensile strength of 35,000 lb. per square inch**. Actual load tests on castings have shown a generous safety factor. Cast iron steps with their inherent corrosion resistant qualities, are easily installed in concrete, brick or block manholes. The tread is scored to meet safety requirements.



R-1982-W Extruded Aluminum